
UNITED STATES MARINE CORPS
THE BASIC SCHOOL
MARINE CORPS TRAINING COMMAND
CAMP BARRETT, VIRGINIA 22134-5019

PHASE II
PERFORMANCE EXAM
B2X0431XP
STUDENT HANDOUT

Phase II Performance Exam

Introduction	The Mid-Performance Evaluation Exam will be conducted at the completion of all classroom instruction and hands-on instruction of Phases 1 and 2 of the program of instruction. Students are expected to bring the equipment outlined on page six of this document. The exam consists of nine stations testing the learning objectives outlined below.
---------------------	---

Importance	The Mid-Performance Evaluation Exam will be 8 percent of a student's academic grade.
-------------------	--

Learning Objectives	The learning objectives outline in this handout will be evaluated on the Phase II Performance Exam. Students are expected to review the Learning Objectives in preparation for taking the exam. The Learning Objectives are listed by event.
----------------------------	--

Learning Objectives

Close Air Support Station	TBS-AVI-1000e Given an evaluation, identify rotary wing 9-line CAS elements, in sequence, without error
----------------------------------	---

TBS-AVI-1000d Given an evaluation, identify fixed wing 9-line CAS elements, in sequence, without error.

Combat Orders / Tactical Planning	TBS-OFF-2102k Develop a mental estimate of the situation using METT-TC.
--	---

TBS-PAT-2002c Determine higher, Adjacent and Supporting to accomplish the mission.

TBS-PAT-2002d Develop commander's intent to support achievement of higher's mission.

TBS-PAT-2002e Develop a scheme of maneuver.

TBS-PAT-2002g Develop coordinating instructions.

TBS-C2-1002a Conduct tactical planning for an operations order.

Officer and Enlisted Oaths	Without error administer the Officer Oath of Office.
-----------------------------------	--

Without error administer the Enlisted Oath of Office.

Squad Weapons

TBS-LMG-1001 Perform operator maintenance for an M249 light machinegun to ensure the weapon and components are operational.

TBS-LMG-1001b Given an M249 light machinegun, disassemble and assemble the M249 within 7 minutes.

TBS-LMG-1001c Inspect the M249 to ensure serviceability.

TBS-LMG-1003g Given an evaluation, identify the characteristics of the M249 light machinegun.

TBS-LMG-1004c Take the weapon out of Battery.

TBS-M16-1001 Perform weapons handling procedures w/ a service rifle.

TBS-M16-1004 Demonstrate weapons carries with a service rifle without endangering personnel or equipment.

TBS-M203-1001a Given a service rifle with a mounted M203 grenade launcher, clear the M203 grenade launcher, to ensure the breach is empty.

TBS-M203-1001b Disassemble and assemble M203 in four minutes.

TBS-M203-1001d Perform a function check.

TBS-M203-1002 Perform weapons handling procedures w/ wpn.

TBS-9MM-2001 Perform weapons handling procedures with the service pistol, without violating the four safety rules.

TBS-9MM-2002 Perform operator maintenance for the service pistol, to ensure proper operation and user serviceability.

Combat Life Saving

TBS-MED-1005 Given a simulated casualty, an Individual First Aid Kit (IFAK), and field expedient materials, apply a tourniquet, to prevent further bleeding or death.

TBS-MED-1003 Given a casualty, wearing a fighting load and an Individual First Aid Kit (IFAK), perform Care Under Fire (CUF), to prevent additional casualties.

TBS-MED-1003c Identify types of bleeding

TBS-MED-1006 Perform tactical field care.

TBS-MED-1006a Treat a casualty for bleeding.

TBS-MED-1006b Evaluate a casualty.

TBS-MED-1006c Treat a sucking chest wound.

TBS-MED-1006d Evaluate a casualty for additional wounds.

CBRN

TBS-CBRN-2301 Given a unit, a tactical scenario, a training area, and individual protective equipment, employ CBRN protective measures to prevent further contamination and complete the mission.

TBS-CBRN-1001 Given a CBRN environment, a field protective mask (SL-3 complete), CBRN alarm and CBRN incident indicator, or an order to mask, employ the field protective mask (FPM) within a time limit of nine seconds.

TBS-CBRN-2301c Given a simulated chemical or biological attack, MOPP gear, a poncho, and a CBRN alarm or order, assume appropriate MOPP level, to minimize chemical or biological casualties.

TBS-CBRN-2301i Given an evaluation, define CBRN survey functions, without omission.

**Land Navigation /
Operational Terms and
Graphics**

TBS OFF-2102 Implement WF Concepts

TBS-OFF-2102a Identify Op Terms/Graphics

TBS-OFF-2102c Employ Op Terms/Graphics to completely represent the situation and execution

TBS-PAT-1002 Navigate to an Objective

TBS-PAT-1002c Identify terrain features

TBS-PAT-1002e Given a military topographic map, protractor, determine/plot grid coordinates to within 30 meters.

TBS-PAT-1002f Determine distance between two points using bar scale, within a tolerance of 30 meters

TBS-PAT-1002g Determine grid azimuth to within 3 degrees.

TBS-PAT-1002h Given a military topographic map, protractor, a grid or magnetic azimuth, a compass error, convert an azimuth.

TBS-PAT-1002n Given two azimuths from known points, or one azimuth and a linear feature, conduct an intersection to determine location of an unknown point.

**PRC-117 / PRC-152
Communications
Station**

TBS-COMM-2101 Given a radio, perform basic radio operations, to ensure equipment is functional without compromising communications.

TBS-COMM-2101a Given a radio transmitter with SL-3 components, assemble a VHF radio, without omission.

TBS-COMM-2101c Given a radio transmitter with SL-3 components and a CEOI, conduct a communications check, to establish radio communications.

TBS-COMM-2101d Given a radio transmitter with SL-3 components and a CEOI, communicate a message that is properly received/understood.

Fire Support

TBS-FSPT-2002a Given a fire mission and a tactical radio, transmit the six elements of the call for fire, in sequence, without omission.

TBS-FSPT-2002b Given a fire mission and distance to target, employ an observer target (OT) factor to calculate deviation corrections.

TBS-FSPT-2002c Given a map, compass, protractor, and target, determine the direction to the target from the observer's position, in mils, to transmit to the fire direction center.

TBS-FSPT-2002d Given an evaluation, define the components of a message to observer, in sequence without omission.

TBS-FSPT-2002f Given a fire mission, firing agency, rounds, and a target, apply bracketing, to achieve effects on target.

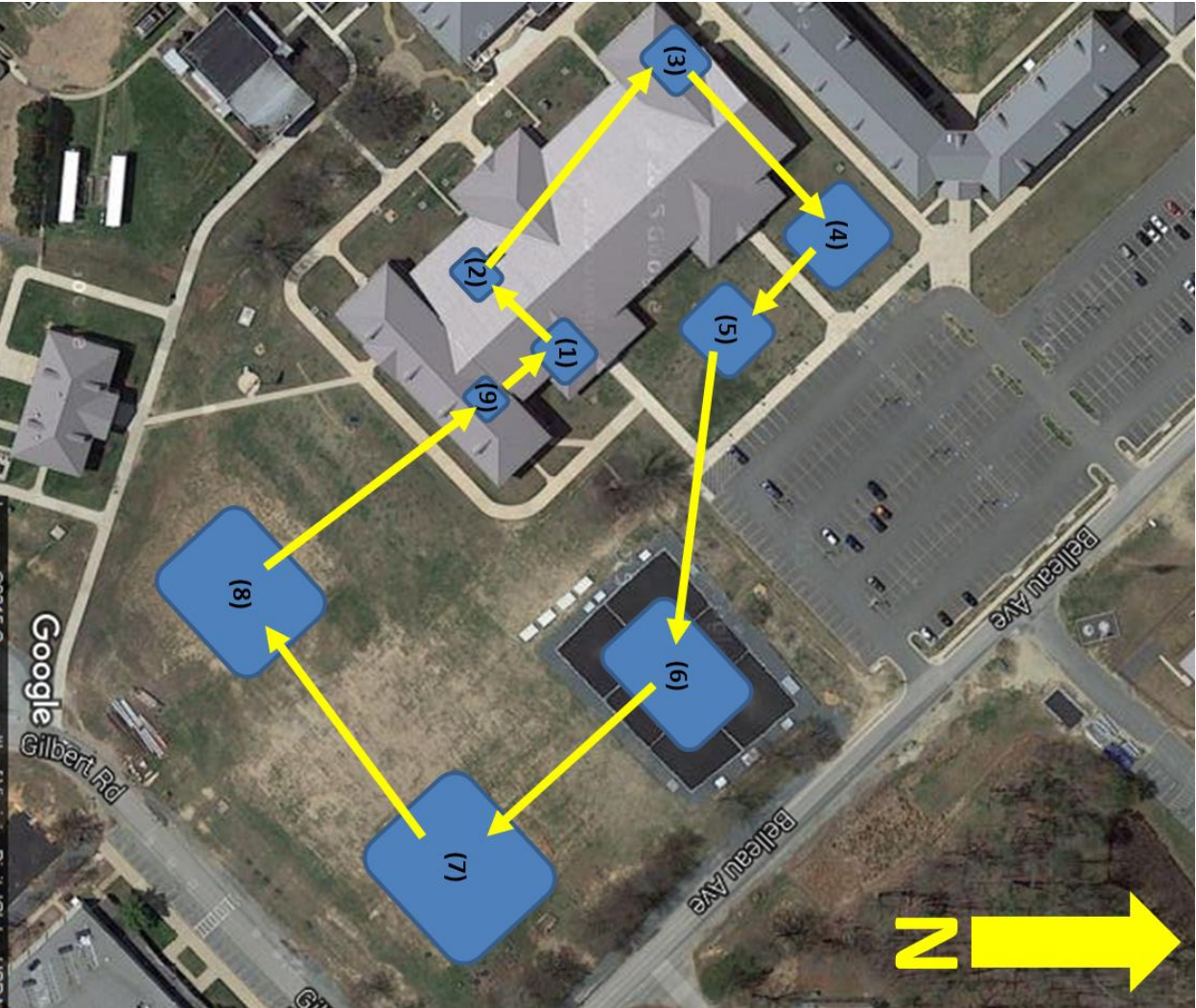
TBS-FSPT-2002g Given a fire mission, firing agency, rounds, and a target, fire for effect, to achieve effects on target.

TBS-FSPT-2002h Given a fire mission with effects on target, conduct RREMS (refine, record as target, end of mission, surveillance), for transmission to the fire direction center.

TBS-FSPT-2003 Given a map, compass, protractor, target, and a radio with frequency, call for indirect fire using the polar method, to achieve effects on target within three corrections.

TBS-FSPT-2003a Given a fire mission, target, compass, map, protractor and tactical radio, determine target location using the direction and distance from the observer to the target, in order to send the second transmission of a polar mission.

(1) Close Air Support (Classroom 1) Alpha: 1stPlt / 1stSqd Bravo: 2ndPlt / 1stSqd
(2) Combat orders/Tactical Planning (Fox Discussion Room) Alpha: 1stPlt / 2ndSqd Bravo: 2ndPlt / 2ndSqd
(3) PRC – 117 / PRC-152 Radio Check (Vietnam Room) Alpha: 1stPlt / 3rdSqd Bravo: 2ndPlt / 3rdSqd
(4) Officer and Enlisted Oaths (Front of Heywood Hall) Alpha: 3rdPlt / 1stSqd Bravo: 4thPlt / 1stSqd
(5) Squad Weapons Melting Pot (Front of Heywood Hall) Alpha: 3rdPlt / 2ndSqd Bravo: 4thPlt / 2ndSqd
(6) First Aid/CLS (MCMAP PITS) Alpha: 3rdPlt / 3rdSqd Bravo: 4thPlt / 3rdSqd
(7) CBRN / MOPP levels (LZ-6) Alpha: 5thPlt / 1stSqd Bravo: 6thPlt / 1stSqd
(8) Land Navigation/Op Terms and Graphics (LZ-6) Alpha: 5thPlt / 2ndSqd Bravo: 6thPlt / 2ndSqd
(9) Call for Fire – Polar (S-3 Conf. Room) Alpha: 5thPlt / 3rdSqd Bravo: 6thPlt / 3rdSqd



- Gear List
- FLAK / KEVLAR
 - Water source
 - IFAK
 - Quantico
 - MIM LAND NAV
 - SPECIAL (1:50k) map
 - Note taking gear
 - Map pens
 - Military protractor
 - THULES Manual
 - Gas Mask
 - Head Lamp
 - Tarp
 - Compass

MID-PERFORMANCE EXAM SCORE CARD														
NAME:					TOTAL SCORE:									
PLATOON:					/100									
STATION	SCORE	EVALUATION / INSTRUCTOR COMMENTS												INT
1 CAS	/12	Gameplan (3pts)		Lines 1-3 (2pts)		Lines 4-6 (3pts)		Lines 7-9 (3pts)		Remarks (1pt)				
2 Combat Orders	/11	Orientation	Enemy	Friendly/ Attached	Mission	Cmdr's Intent	Con Ops	FSP	Tasks	Coord Inst	Admin&Log	Sig & Cmd		
3 Comm	/11	Antenna (2pts)		Programing (2pts)		ID/Freq (2pts)		Radio Check (2pts)		Report (3pts)				
4 Oaths	/10	Officer Oath (5pts)					Enlisted Oath (5pts)							
		Line 1	Line 2	Line 3	Line 4	Line 5	Line 1	Line 2	Line 3	Line 4	Line 5			
5 Weapons	/12	M249 Assemble (2pts)		M249 Function Check (2pts)		M16 / M203 Assemble (2pts)		M16 / M203 Function Check (2pts)		M9 Assemble (2pts)		M9 Function Check (2pts)		
6 CLS	/12	Arterial Bleeding (3pts)		Venous Bleeding (3pts)		Sucking Chest Wound (3pts)		Shock (3pts)						
7 CBRN	/10	MOPP2 (2pts)		MOPP 4 (2pts)		Employ M8 (2pts)		M8 Color (2pts)		Employ ATNA (2pts)				
8 Land Nav	/10	Ops Terms / Graphics (2pts)		Plot Points w/in 50m (2pts)		Azimuths +/- 3°(2pts)		Distances +/- 30m (2pts)		Intersection (2pts)				
9 Call for Fire	/12	Call For Fire (6pts)		Message to Observer (1 pt)		Corrections (3pts)		RREMS (2pts)						

Notes