
UNITED STATES MARINE CORPS
THE BASIC SCHOOL
MARINE CORPS TRAINING COMMAND
CAMP BARRETT, VIRGINIA 22134-5019

FIRE SUPPORT PLANNING

B2C0329XQ-DM

STUDENT HANDOUT

Fire Support Planning

Introduction

The United States Marine Corps is one of the premier fighting organizations in the world. One of the key reasons is its ability to successfully integrate its supporting arms into the total combined arms effort. This handout examines the essential elements of fire support planning and processing.

Importance

We will be discussing the 13 principles of fire support planning, how to complete a target list worksheet, fire support coordination measures, and fire support planning in the offense and defense.

In This Lesson

This lesson covers the following topics:

Topic	Page
Fire Support Planning Principles	4
Fire Support Planning Agencies	6
Fire Support Coordination Measures	9
Fire Planning Tools and Techniques	15
Target List Worksheet	17
Tactical Missions and Command Relationships	19
Fire Support Planning in the Offense	19
Fire Support Planning in the Defense	20
The Fire Support Plan	21
Summary	24
References	24
Glossary of Terms and Acronyms	24
Notes	25

Learning Objectives

Terminal Learning Objective

TBS-FSPT-1001 Given a scheme of maneuver, fire support available, and an order, develop a fire support plan, to support the ground scheme of maneuver, in accordance with commander's intent.

Fire Support Planning (Continued)

Learning Objectives

Enabling Learning Objectives

TBS-DEF-1002f Given a scenario and an order from higher, determine target precedence, to support the scheme of maneuver.

TBS-DEF-2101d Given a defensive operations order, a unit, and a simulated combat environment, develop an indirect fire plan for the defense that supports the mission.

TBS-FSPT-1001b Given an order from higher with a scheme of maneuver and fire support available, plan targets on known, suspected, and likely enemy positions, avenues of approach, or avenues of withdrawal, to support the ground scheme of maneuver and meet the commander's intent.

TBS-FSPT-1001c Given an evaluation, identify fire support control measures, without error.

TBS-FSPT-1001d Given a mission, a scheme of maneuver, and planned targets, plan priority targets, to support the scheme of maneuver.

TBS-FSPT-1001e Given a mission and a scheme of maneuver, request targets, to support the scheme of maneuver.

TBS-FSPT-1001f Given an evaluation, identify target, trigger, location, observer, delivery asset, attack guidance, communication net (TTLODAC), in sequence, without error.

TBS-FSPT-1001g Given a mission and updated target information, integrate updated fire support plan, to support the scheme of maneuver.

TBS-FSPT-1002c Given an evaluation, identify characteristics of fire support command relationships, without error.

TBS-OFF-2103e Given a unit and an order from higher, integrate supporting arms to support the scheme of maneuver.

Fire Support Planning Principles

Fire support planning is the continuous and concurrent process of analyzing, allocating and scheduling fire support to integrate it with the maneuver forces and maximize combat power. Plan the minimum targets necessary to support the scheme of maneuver. The targeting process, a critical component of the fire planning process, is based on the friendly scheme of maneuver and includes an:

- Assessment of the terrain and enemy.
- Identification of those enemy formations, equipment, facilities, and terrain that must be attacked to ensure success.

The 13 principles to fire support planning that should be considered when developing the plan are:

- Plan early and continuously.
- Exploit all available targeting assets.
- Consider the use of all available fires.
- Use the lowest echelon capable of furnishing effective fire support.
- Use the most effective fire support means.
- Furnish the type of fire support requested.
- Avoid unnecessary duplication.
- Coordinate airspace.
- Provide adequate fire support.
- Provide rapid coordination.
- Provide safeguards and survivability.
- Establish fire support coordination measures.
- Establish communications support.

Purpose

The purpose of fire support planning is twofold:

- To achieve effectiveness and efficiency from fire support assets in meeting fire support requirements of the force.
- To determine the proper allocation of fire support.

Fire Support Planning Principles (Continued)

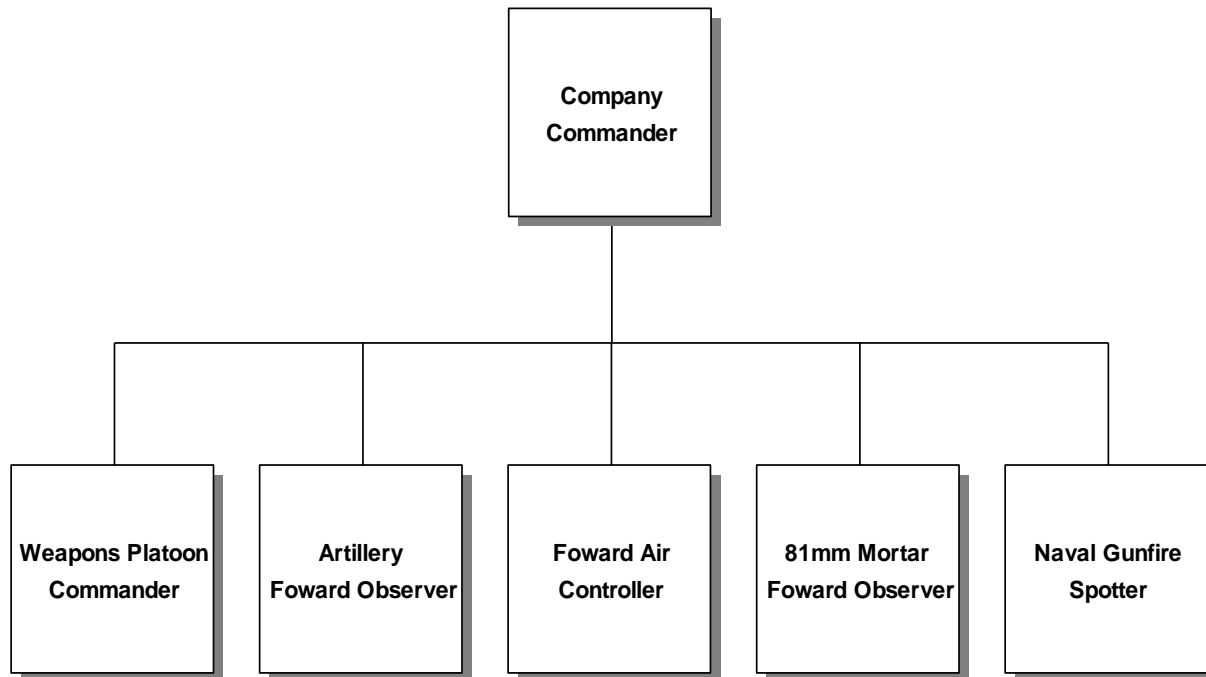
Methods

The Marine Corps uses a fire support planning process involving the interaction of top-down and bottom-up methods:

- Top-down refers to a higher headquarters formally conducting target acquisition, prioritizing targets and allocating the appropriate supporting arms to engage the target. The higher headquarters is better able to conduct fire planning due to greater access to more sophisticated intelligence assets. The higher headquarters staff usually has more qualified personnel with which to analyze information and process a fire support plan.
- Bottom-up fire support planning is often used after the battle has been joined when time is critical. The maneuver units assume a greater role in target acquisition (often on leader's reconnaissance), planning fires, and recommending changes to the target list.

Fire Support Planning Agencies

Company Fire Support Coordination. In an infantry battalion, the rifle company commander is ultimately responsible for fire support coordination at the company level. Like the battalion Fire Support Coordinator (FSC), many experts assist the company commander (see diagram below).



- **Weapons Platoon Commander.** The weapons platoon commander is the primary advisor on the employment of the company's 60mm mortars, and routinely serves as the Fire Support Team (FiST) leader.
- **Artillery Forward Observer (FO).** The artillery FO, normally a lieutenant from an artillery battery supporting the maneuver battalion, is responsible for employment of the FO team. The artillery FO:
 - Calls for and adjusts artillery fire.
 - Aids with fire support planning.
 - Advises the company commander on matters pertaining to integrating all fire support assets.
- **Forward Air Controller (FAC).** The FAC, a pilot or naval flight officer (NFO) captain, is responsible for terminal control of Close Air Support (CAS) and advises the company commander on matters pertaining to air support. The presence of a FAC in the company command group is contingent upon one of the battalion's two FAC parties being attached to the company.

Fire Support Planning Agencies (Continued)

- **81 mm Forward Observer (FO).** The 81mm FO advises the company commander on matters pertaining to 81mm mortars and is responsible for calling for and adjusting mortar fire. The 81mm FO is normally an NCO from the 81mm mortar platoon.
- **Naval Gunfire (NGF) Spot Team.** The NGF spot team advises the company commander on matters pertaining to naval surface fire support (NSFS). Normally an artillery second lieutenant from the artillery battalion in support of the maneuver regiment, the NGF spot team is responsible for NSFS missions. The presence of an NGF spotter in the company command group is contingent upon the attachment of an NGF spot team. The NGF spot team can be split into two teams to support two separate companies for short periods of time.

Fire Support Coordination Center (FSCC). Organization and Information Required. This section discusses only the battalion FSCC.

FSCCs in the Ground Combat Element (GCE). All echelons of the GCE, from division to battalion, will establish an FSCC as an advisory and coordination agency. The FSCC is:

- The agency where supported units plan and coordinate fire support.
- Located with the combat operations center (COC).

Supporting arms units provide representatives and equipment necessary for conducting coordination, targeting, and communication functions for their respective arms. Detailed listings of personnel by grade, military occupational specialty (MOS), and billet description are found on unit Table of Organizations (T/Os).

Infantry Battalion FSCC. Most fire support coordination in operations is performed in battalion FSCCs. All fire support requests originating in the battalion are monitored/received in the FSCC. These requests are checked to ensure that:

- The supporting arms are integrated with the scheme of maneuver.
- Friendly forces are not needlessly endangered.

The battalion FSCC usually coordinates clearances for observers to attack targets outside the battalion's zone of action. Fire support planning efforts by battalion FSCC are relatively limited in comparison to the detailed and extensive planning of higher headquarters. The organization of the battalion FSCC consists of the:

- **Fire support coordinator (FSC).** The weapons company commander of the infantry battalion is usually the FSC.

Fire Support Planning Agencies (Continued)

Infantry Battalion FSCC (Continued).

- **Liaison section.** The liaison section organic to a firing battery of the supporting artillery battalion has four officers, one observer liaison chief, four scout observers, and nine field radio operators. The senior officer is the artillery liaison officer in the battalion FSCC. The remaining three officers are FOs and each heads an FO team to support a company. The FO team consists of the FO, one scout observer, and two field radio operators. When required, an FO team may be divided into two elements, each capable of independent operations for a limited period. The FO teams call for and adjust artillery fires.
- **Tactical air control party (TACP).** The organic battalion TACP consists of three air officers (AirOs) and twelve field radio operators. The senior AirO acts in a dual capacity as a special staff officer to the battalion commander with regard to all aviation matters and as officer in charge (OIC) of the battalion TACP. In the latter capacity, he works within the FSCC as the air officer. Each of the other two aviators is the leader of a FAC party with four communicators each. The FAC parties do a majority of the preplanned and immediate requests for CAS.
- **Shore fire control party (SFCP).** The battalion SFCP from the HQ battery of the supporting artillery battalion includes a battalion NGF liaison team and an NGF spot team. The liaison team performs coordination functions in the FSCC. The liaison team consists of one Naval Gunfire Liaison Officer (NGLO), one NGF chief, and five field radio operators. The spot team is usually employed with a company of the battalion. However, the spot team may be divided into two elements, each capable of independent operations for a limited period of time. Spot teams call for and adjust NSFS. The spot team consists of one NGF spotter (USMC Lt, 0802), two SFCP (0861) men, and two field radio operators.
- **Mortar section.** The 81mm mortar platoon organic to the weapons company provides a mortar liaison party to work in the FSCC and four FO teams to support the companies or man observation posts. The mortar liaison party consists of a mortar representative, two field radio operators, and one wireman.

Fire Support Coordination Measures

Fire Support Coordination Measures (FSCMs) are designed to provide safeguards for friendly forces and at the same time facilitate rapid engagement of targets. FSCMs fall into two broad categories:

- **Permissive.** With the establishment of a permissive measure, no further coordination is required for the engagement of targets affected by the measure. The primary purpose of permissive measures is to facilitate the attack of targets.
- **Restrictive.** The establishment of a restrictive measure imposes certain requirements for specific coordination prior to the engagement of those targets affected by the measure. The primary purpose of restrictive measures is to provide safeguards for friendly forces.

The FSC is responsible for recommending the establishment of all FSCMs, with the exception of boundaries. Recommendations are based on the:

- Maneuver commander's guidance.
- Location of friendly forces.
- Scheme of maneuver.
- Anticipated enemy actions.

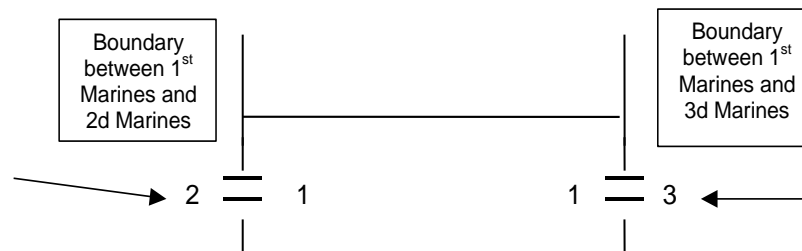
Once established, FSCMs are displayed on maps, firing charts, and overlays. Graphical portrayal will include at a minimum (all in black) the:

- Abbreviation of the FSCM.
- Establishing headquarters.
- Effective date-time-group (DTG).

Fire Support Coordination Measures (Continued)

The maneuver commander uses boundaries in both the offense and defense to designate the geographical area for which a particular unit is responsible.

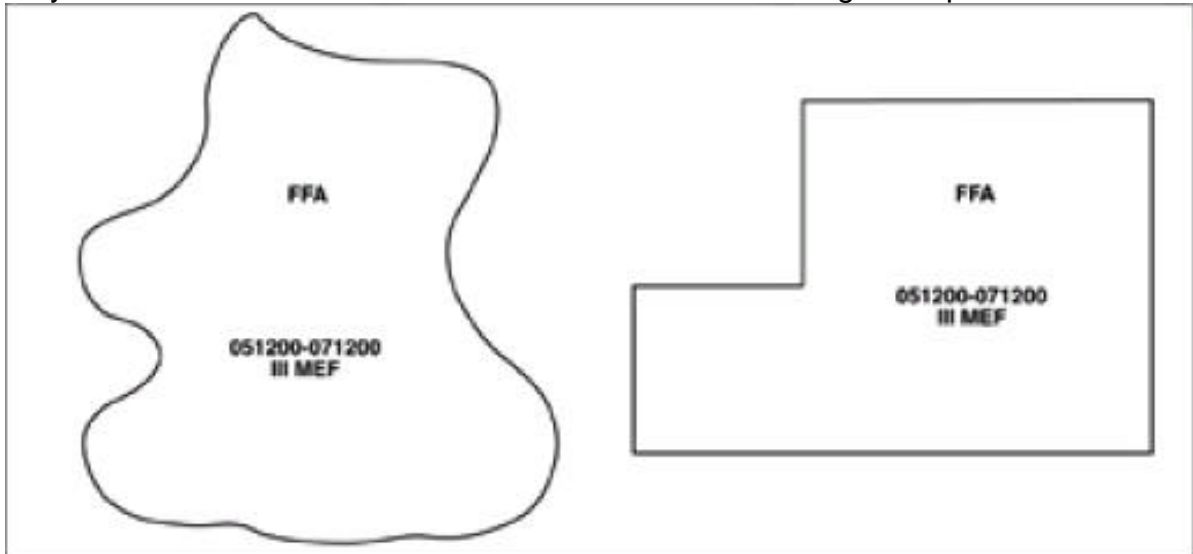
- **Boundaries:**
 - Describe the zone of action or sector of a maneuver unit.
 - Are usually assigned along terrain features easily recognizable on the ground.
 - Are so situated that key terrain features and avenues of approach are completely included in the area assigned to a unit.
 - Also serve as the basic FSCM. As such, they are both permissive and restrictive in nature. Boundaries are:
 - Restrictive in that no fire support should be delivered across a boundary unless the fires are coordinated with the force having responsibility within the boundary. Fires delivered within close proximity to boundaries also should be coordinated with the adjacent unit.
 - Permissive in that within his own boundaries, the maneuver commander enjoys complete freedom of fire and maneuver.



Fire Support Coordination Measures (Continued)

Permissive FSCMs.

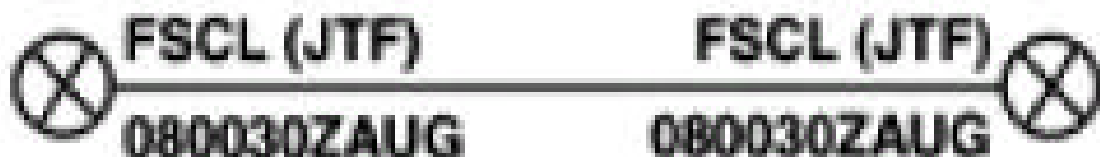
- **Free Fire Area (FFA).** Specific designated area into which any weapon system may fire without additional coordination with the establishing headquarters.



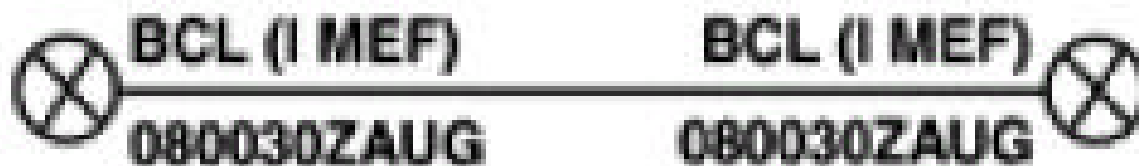
- **Coordinated Firing Line (CFL).** Expedites surface-to-surface attack beyond CFL without coordination with the ground commander in whose area the targets are located.



- **Fire Support Coordination Line (FSCL).** Expedite surface-to-surface AND air-to-surface attack beyond FSCL without coordination with the ground commander in whose area the targets are located.

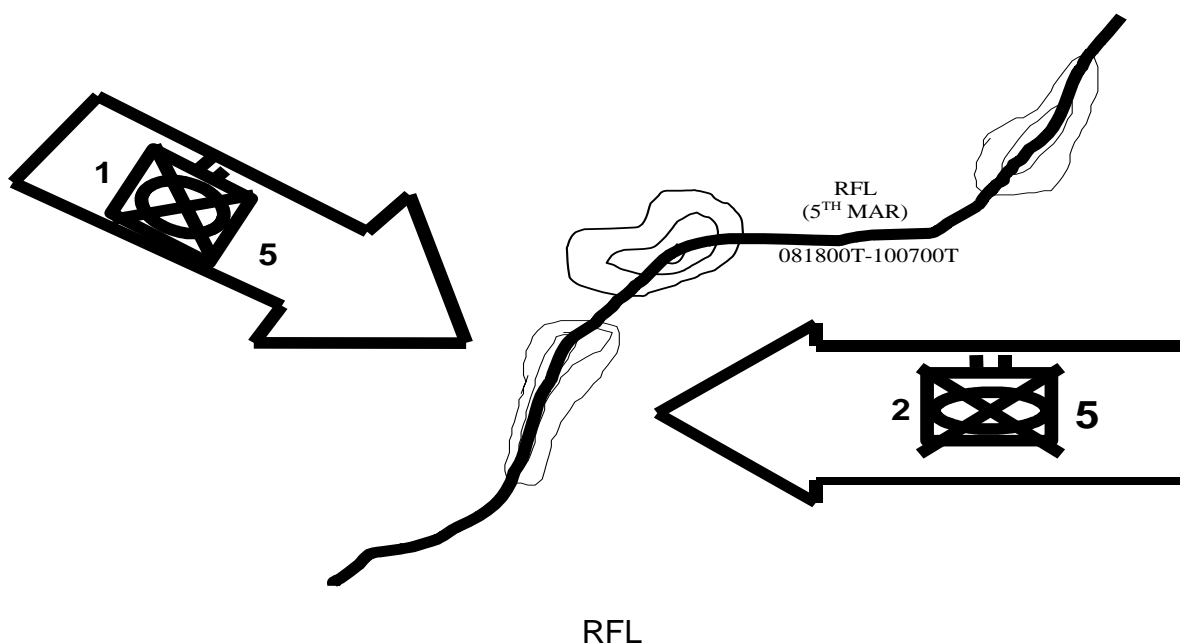


- **Battlefield Coordination Line (BCL).** Expedite surface-to-surface AND air-to-surface attack beyond FSCL without coordination with the ground commander in whose area the targets are located EXCLUSIVELY BY MAGTF FIRE SUPPORT ASSETS.



Restrictive FSCMs.

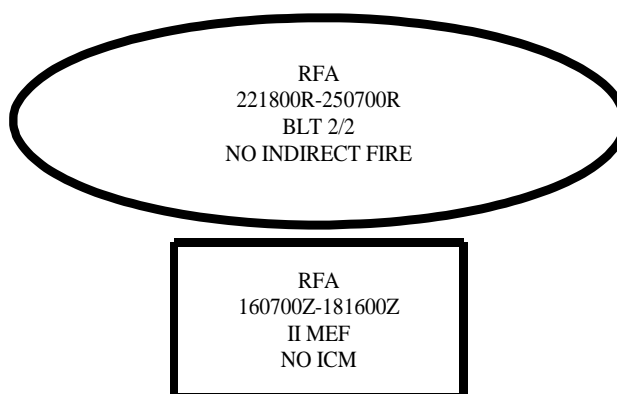
- **Restrictive Fire Line (RFL).** An RFL is a line established between converging friendly forces (one or both may be moving) that prohibits fires, or effects of fires, across the line without coordination with the affected force. The purpose of the RFL is to regulate all fires occurring between converging forces. The common commander of the converging forces:
 - Establishes the RFL.
 - May delegate establishing authority to the senior commander of the two converging forces or to the commander of the maneuvering force in a linkup operation between a moving and stationary force.
 - The RFL should be located on identifiable terrain. In linkup operations, the RFL is moved as close as possible to the stationary force to allow maximum freedom of action for the maneuver and fire support of the linkup force.
 - Upon arrival, the FSCC disseminates the RFL to the subordinate, adjacent, and higher headquarters, as required. The RFL is further disseminated at each level of command, to include the establishing command, and to all concerned fire control agencies and other services as may be applied.
 - The location of the RFL is graphically portrayed on maps, charts, and overlays by a solid black line with the letters "RFL" followed by the establishing headquarters in parentheses above the line and the effective DTG below the line (see diagram below).



Fire Support Coordination Measures (Continued)

Restrictive FSCMs (Continued).

- **Restrictive Fire Area (RFA).** An RFA is an area in which specific firing or coordination restrictions are imposed and into which fires in excess that exceeds those restrictions will not be delivered without coordination with the establishing headquarters. The purpose of the RFA is to regulate fires into an area according to the stated restrictions. This means that fires or certain types of ordnance (e.g., limitations on improved conventional munitions (ICM) or family of scatterable mines (FASCAM)) can be controlled in an area where friendly forces are or will be located.
 - Any ground unit commander may establish an RFA within his zone; however, an RFA is not normally established below the battalion level. When RFAs are used to protect a unit from friendly fires (e.g., light armored reconnaissance (LAR) unit), the size of the RFA should be sufficient to allow the maneuver of the unit but not so large as to needlessly restrict fire support in other areas. To facilitate rapidly changing maneuver areas, on-call RFAs may be used. The dimensions, location, and restrictions of the on-call RFA are prearranged. The RFA is activated and deactivated when requested by the maneuvering unit or scheduled by time or event.
 - An RFA may be on recognizable terrain expressed either by:
 - Grid coordinates.
 - Radius from a point.
 - The establishing commander disseminates an RFA to the FSCCs of subordinate, adjacent, and higher headquarters, as required. An RFA is further disseminated to each level of command, including the establishing command, and to all concerned fire support agencies.
 - The RFA is graphically portrayed on a map, chart, or overlay by an area bounded by a black line with the letters "RFA", the designation of the unit establishing the area, and the effective DTGs inside the line (see diagram below).



Fire Support Coordination Measures (Continued)

Restrictive FSCMs (Continued).

- **No Fire Area (NFA).** An NFA is an area into which no fires or effects of fire are allowed. The two exceptions to an NFA are:
 - The establishing headquarters may approve fires temporarily within the NFA on a mission-by-mission basis.
 - If any enemy force within the NFA engages a friendly force and the engaged unit leader determines there is no time for coordination, he may "respond in kind" with fires into the NFA.

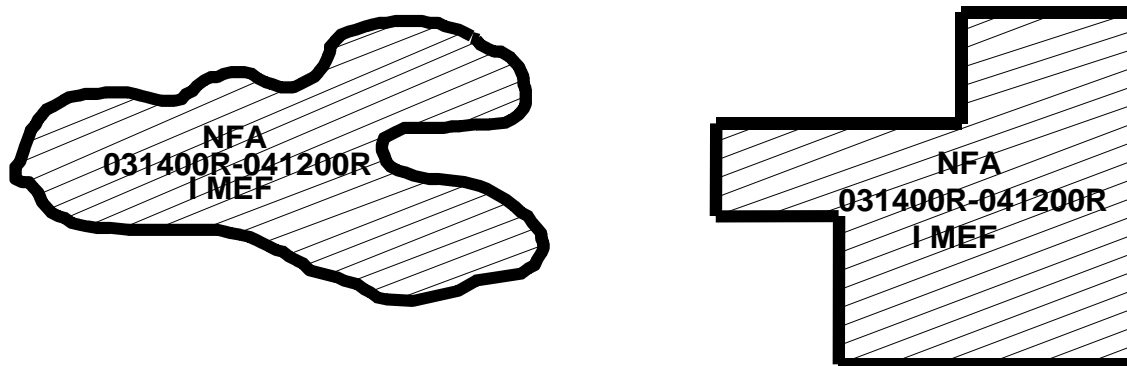
The purpose of the NFA is to prohibit fires or their effects in the area, normally to protect civilians. Typically, the host nation establishes an NFA. On arrival of military forces, the force commander coordinates the location of an NFA with local authorities.

Normally, an NFA is on recognizable terrain, but its location may also be expressed either by:

- Grid coordinates.
- Radius from a center point.

The force commander disseminates the NFA to all units of the force.

An NFA is graphically portrayed (see diagram below) in black with diagonal lines drawn through the enclosed area. The letters "NFA" are written inside the enclosed area, along with the effective DTG and the headquarters of the establishing unit.



NFA

Fire Planning Tools and Techniques

Targeting

- The process of selecting targets and matching the appropriate response to them taking into account operational requirements and capabilities.
- An integral part of the planning process based on a detailed estimate of the situation (METT-T).
- Designed to support the scheme of maneuver.

Target

A target is a geographical area, complex, or installation planned for capture or destruction by military forces. Targets can be planned in advance or, due to the dynamic nature of the battlefield, can be engaged as they appear. What we target in order of precedence are:

- Known enemy positions - enemy units that we have located with a great degree of certainty.
- Suspected enemy positions - enemy units that have been located without a great degree of certainty or that have been accurately located but are very mobile and may move.
- Likely enemy positions. Where would you put your units if you were the enemy?

List of Targets

Subordinate units submit a list of targets to higher with targeting information. The list contains all targets the subordinate commander feels are necessary to be engaged with indirect fires in order to support his scheme of maneuver.

Target List

- A formal document created at the highest level of command.
- The consolidation of all the list of targets submitted with all redundancies removed.
- Then disseminated to all subordinate commands on a Target List Worksheet.
- Targets on the target list will always have a target number assigned.

Target Numbering System

The target number consists of six characters: two letters and four numbers. The two-letter group may be used to indicate the originator of the target number and/or the level holding the target data.

Planned Targets. Planned targets are prearranged targets against which fires (surface or air delivered) can be delivered quickly. By planning ahead and determining what you wish to target, you can give the supporting arms agencies time to work up firing data or plan missions for air. Planned targets can be subdivided into the following four categories:

1. On-call targets are targets:

- On which certain supporting arms will deliver a *predetermined type and amount* of munitions *when requested*.
- That provide responsiveness and flexibility on time of delivery, such as in the defense when we do not know when the enemy will attack.

2. Scheduled targets are:

- Simply on-call targets with a timeline associated with them.
- Fired at a *specific time*, for example at H-hour or L-hour in support of a landing.

3. Priority targets are primarily used in the offense when rapid response is needed. When requested, priority targets take priority over all other requests. When not engaged in a fire mission, supporting units assigned a priority target set the priority target data on their guns and lay on that target. A priority target has a planned type and amount of munitions to be expended. Priority targets are designated at the discretion of the maneuver commander and may be shifted or changed as the supported unit moves forward. A firing unit can have a priority target or an final protective fire (FPF) but not both.

4. FPFs offer an immediately available prearranged barrier of fire designed to impede enemy movement across defensive lines or areas (JCS Pub 1-02). FPFs are used only in the defense. When not engaged in fire missions, artillery and mortar units set FPF data on their guns and lay on their assigned FPF targets. A firing unit (battery or 81mm mortar platoon/section) will have only one FPF.

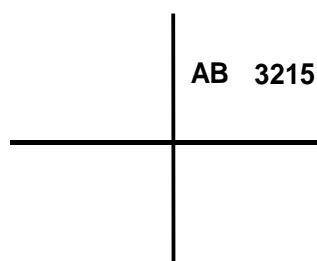
Fire Planning Tools and Techniques (Continued)

Target Symbols

The basic symbol used in fire planning is the target. Targets relate to personnel, material, or pieces of terrain that are designated and numbered for reference and/or firing.

- If you plan a target, that doesn't mean you have to shoot it. The target can be used to shift from the target as a known point, which is most expeditious for an FO in a highly mobile environment.
- The fundamental symbol used for a point target is a cross (tick mark). The point target symbol (see diagram below) is:
 - Used for targets that are less than or equal to 200 meters in length and width.
 - Drawn and labeled in black.
 - Identified by a six-digit alpha-numeric number in the upper right quadrant.

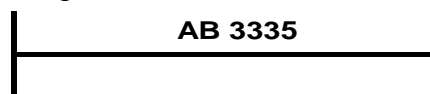
The location of this target is normally given by a six-digit grid coordinate.



Point Target Symbol

- A linear target symbol is:
 - Used for targets greater than 200m, but less than 600m, in length.
 - Labeled above the target symbol.
 - Drawn and labeled in black.

Identifying the center grid, attitude, and length identifies the location of this target.



Linear Target Symbol

Measure the angle of the long axis of the target from grid north (GN) to determine the attitude of rectangular and linear targets (see diagram below). The figure is then expressed to the nearest 100 mils. An attitude will always be between 0 and-3200 mils.

$$1^{\circ} = 17.777778 \text{ mils}$$

Target List Worksheet

The target list worksheet (see diagram on next page) is a:

- Document that facilitates fire planning by the FSC.
- Preliminary listing of all targets and their descriptions from which the FSC can select and plan.

Target List Worksheet (Continued)

<div style="text-align: center;"> TARGET LIST <div style="float: right;">SHEET ____ OF ____</div> </div>												
LINE NO	TARGET NO	DESCRIPTION	LOCATION	ALTITUDE	ATTITUDE	SIZE		SOURCE ACCURACY	REMARKS	A1 C	A2 C	CH EV
						LENGTH	WIDTH					
1	AC2000	EN PLT IN	657592	440	2400	300						
2	AC2001	BN ASSEMBLY	723464	480			1000					
3	AC2002	POL SITE	738575	430	1100	400	200		HE/WP			
4	AC2003	BN CP	725458	490								
5	AC2004	ZSU 23-4	728461	500								
6	AC2005	D30	769541	420								
7												
8												
9												
10												
11												
12												
13												
14												
15												

Target Number. Assigned to each from the block of numbers given to the planning source.

Location and Altitude. Determine grid (at least 6 digits) and altitude (always in meters) as accurately as possible. Grid zone may be required if operating off multiple map sheets.

Line No. An administrative control measure for internal use for transmitting data by radio/wire. Each target is assigned a line number. Line numbers are assigned consecutively from page to page.

Attitude. Attitude is the orientation of a linear or rectangular target on the ground. It is always a direction in mils. Attitude is always between 0-3200mils. Determination to the nearest 100 mils is sufficient.
 0 mils = N or 0 degrees,
 1600 mils = E or 90 degrees,
 3200 mils = S or 180 degrees
 4800 mils = W or 270 degrees

Size.
 Point Target: no dimensions
 Linear Target: length only
 Rectangular target: length and width
 Circular Target: width (radius) only

Remarks.
 Additional target description or specific ammunition.

These columns are used to help in planning fires in a schedule. When creating the target list, place a "/" in the block opposite the target if it is to be fired in a schedule. Once it has been scheduled (scheduling worksheet), place a "v" in the same box to form an "X".

Tactical Missions and Command Relationships

General Support. That support which is given to the supported force as a whole and not to any particular subdivision thereof. Requires a unit to support the force as a whole and be prepared to support any subordinate element. This provides the ability to influence widely separated actions.

Direct Support. Tactical mission requires a force to support another specific force and authorizing it to answer directly to the supported forces' request for assistance. This requires the unit to furnish close and continuous fires to a single supported unit. Commander will position his firing units to deliver fires in the zone of action of the supported unit. Supported unit has priority of fires.

Attached. The placement of units or personnel in an organization where such placement is relatively temporary.

Fire Support Planning in the Offense

Provide support in the offense by using all available fire support means to accomplish the essential fire support tasks (EFSTs) that the maneuver commander designated.

Plan to provide fire support:

- **Preparation phase.**
 - Attacking targets as part of a deception effort.
 - Using smoke to screen the movement of friendly forces preparing for the attack.
 - Softening enemy defenses before the attack by engaging enemy indirect fire weapons, observation posts (OPs), reserves (or second echelon forces), command and control centers, logistic and assembly areas, or front line defenses.
- **Conduct phase.**
 - Supporting the movement/maneuver and potential meeting engagements by:
 - Providing responsive fires to leading elements.
 - Implementing an aggressive counter fire plan to prevent enemy indirect fires from unnecessarily delaying the advance.
- **Consolidation phase.**
 - Protecting friendly units during reorganization.
 - Breaking up enemy counterattack.
 - Preventing enemy reinforcement, disengagement, or resupply.
- **Exploitation phase.**
 - Providing mobile, flexible fire support for maneuvering units.
 - Placing fires on bypassed enemy pockets of resistance to fix them for attack by a more suitable means of fire and/or by follow-up forces.
 - Providing fires to slow enemy retreat.

Fire Support Planning in the Defense

Provide support during the defense by using all available fire support means to accomplish the EFSTs that the maneuver commander designated. The defense is organized into the:

- Long range fires.
- Close defensive fires.
- Final Protective Fires (FPF).

- **Long Range Fires.**
 - Engage the enemy with deep fire to create confusion and cause him to deploy forces early.
 - Provides fire for security units such as patrols.
 - Use all available fire support to support the security force fight.

- **Close Defensive Fires.** When planning fire support in the MBA, plan to:
 - Mass fires to canalize and slow enemy forces.
 - Fire on obstacles to disrupt breaching effort and to inflict maximum casualties.
 - Use fire support to isolate enemy forward echelons.
 - Use smoke and other fires to assist supported units in disengaging and moving.
 - Fire to separate infantry from armor.

- **Final Protective Fires.** An immediately available prearranged barrier of fire designed to impede enemy movement across defensive lines or areas
 - Priority target in the defense
 - Placed on most likely dismounted avenue of approach
 - Lengths of FPFs
 - **Artillery Battery - 300m**
 - **81MM Platoon - 280m**
 - **60MM Section - 90m**
 - Danger Close distances:
 - **Mortars and artillery– 600m**
 - **NSFS (5"/127mm)– 750m**

The Fire Support Plan (MCWP 3-16)

Fire Support Plan. “A tactical plan containing information necessary for the employment of fire support in the operation.”

- Located in Paragraph 3 (Execution) of the 5 paragraph Order.

I. Tasks: Describes the targeting objective fires must achieve against a specific enemy formation’s function or capability.

Disrupt: Means to preclude efficient interaction of enemy combat or combat support systems. Simplified, it means to not let an enemy formation perform a specific function: not to do what it is supposed to do.

Example: *Disrupt the AT battery long range fires against the TF flank companies.*

Delay: Means to preclude efficient interaction of enemy combat or combat support systems. Simplified, it means to not let an enemy formation perform a specific function: not to do what it is supposed to do.

Example: *Delay the ability of the advance unit to support the security element with direct fires.*

Limit: Applies to reducing the options or courses of action available to the enemy commander. To limit capabilities implies we also disrupt enemy plans by precluding effective interaction or the cohesion of enemy combat and combat support systems.

Example: *Limit the ability of the enemy air assault company to establish an LZ in the high ground west of the firebase.*

Divert: Addresses the commander’s desire to tie up critical enemy resources. Divert indirectly reduces the enemy commander’s capability to continue his plans.

Example: *Divert the logistics convoy from resupplying the enemy maneuver force on Co Obj A.*

II. Fire Support Effects: Attempts to quantify successful accomplishment of the task. It provides the looker with a measure of effectiveness (MOE) for the task.

Suppress: To suppress is to temporarily degrade the performance of a force or weapons system below the level needed to accomplish the mission. Suppression usually lasts only as long as the fires or their effects continue. **Usually involves a specified amount of time for the target to be suppressed (i.e. Enemy MG squad suppressed for 3 minutes)**

Neutralize: To neutralize is to render enemy personnel or material incapable (10 %) of interfering with a particular operation. **(Enemy MG squad is neutralized, (1) MG incapable of placing fires on our support by fire position).**

Destroy: Apply lethal combat power on an enemy capability (30%) so that it can no longer perform any function and cannot be restored to a usable condition without being entirely rebuilt. **(LP/OP is destroyed and 1st Platoon able to reach the assault position)**

Screen/Obscure: Friendly forces are screened and/or enemy positions are obscured. This applies when using smoke to mask movement to a specific objective or tactical control measure.

III. Process of developing the Fire Support Plan:

- Determine the critical event for the phase
- Determine the conditions that must be set for that phase
- Identify the conditions that cannot be set through maneuver
- Identify the assets available
- Develop your FSP based off this analysis

IV. Briefing the Fire Support Plan:

- **Execution**
 - **SOM**
 - The Plt commander will brief fires in his SOM only as much as they set conditions for maneuver
 - **Fire Support Paragraph**
 - The platoon commander will brief each EFST through TPME
 - Each TPME may have multiple targets and will be briefed in the Method through Target, Trigger, Location, Observer, Delivery System, Attack Guidance, Comm Net (TTLODAC)**

V. Task-Purpose-Method-Effect (TPME)

- **Task:** Divert, Delay, Disrupt, & Limit (Enemy focused)
- **Purpose:** IOT support the friendly SOM (Sets the condition)
- **Method:** Priority, Allocation, & Restrictions (Company Level). Plt Cmdr locates targets available and refines from Company (**Method**) and briefs TTLODAC as his/her Method.
- **Effect:** Destroy, Neutralize, Suppress, Screen, & Obscure (Quantifiable based on enemy)

VI. TTLODAC

Target (Target # or type of target)

Trigger (When to fire the target)

Location (Minimum 6 digit grid)

Observer (Primary & Alternate)

Delivery System (Mortars, Arty, Air)

Attack Guidance (Ammo, special instructions)

Comm Net (Co Tac, Arty COF)

SUMMARY OF FIRE SUPPORT PLAN:

After the unit leader develops his/her SOM, the unit leader must decide how many parts fires will need to be implemented (Preparation, Conduct, Consolidation/ Exploitation for Offense and Long Range, Close Range, Final Protective Fires for Defense). Once he/she decides how many parts based on the SOM, the unit leader reads his/her higher's Fire Support plan to ensure that his/her Fire Support plan is in concert with higher. Specifically, the unit leader reads the **METHOD** to find out where they fit in the priority, allocation, and if there are any restrictions. Then, the unit leader develops his/her own Fire Support Plan (using the TPME format), and develops the appropriate amount based on how many parts the unit leader feels supports his/her SOM. The unit leader writes the appropriate **TASK** (Divert, Delay, Limit, Disrupt) that goes after the enemy; the **PURPOSE** that satisfied his/her elements reaching a specific piece of terrain/objective/TCM; the **METHOD** which is briefed through TTLODAC for each target in that phase; and the **EFFECTS** (Suppress, Neutralize, Destroy, Screen/Obscure) that he/she wants achieved to that enemy during the movement.

Summary

The effective use of supporting arms can mean the difference between victory and defeat. The tools presented in this lesson, along with the practical application training you will execute are the first steps in understanding how to best use this force multiplier.

References

Reference Number or Author	Reference Title
FM 7-90	Tactical Employment of Mortars
FMFM 2-7	Fire Support in MAGTF Operations
MCWP 3-16	Fire Support Coordination in the Ground Combat Element
MCWP 3-16.6A	Supporting Arms Observer, Spotter, and Controller (FMFM 6-8)
MCRP 3-16A	TTPs for the Targeting Process
MCRP 3-16.2	Techniques and Procedures for Fire Support Coordination
MCWP 3-23.1	Close Air Support
FMFM 6-9	Marine Artillery Support
FMFM 6-18.1	TTPs for the Marine Corps Fire Support System

Glossary of Terms and Acronyms

Term or Acronym	Definition or Identification
AirO	Air officer
CAS	Close air support
COC	Combat operations center
DTG	Date-time-group
EFST	Essential fire support task
FAC	Forward air controller
FASCAM	Family of scatterable mines
FiST	Fire support team
FO	Forward observer
FPF	Final protective fire
FSC	Fire support coordinator
FSCC	Fire support coordination center
FSCM	Fire support coordination measure
GCE	Ground combat element
ICM	Improved conventional munitions
LAR	Light armored reconnaissance
MBA	Main battle area
METT-T	Mission, enemy, terrain and weather, troops and fire support available, and time
MOS	Military occupational specialty
NFA	No fire area
NFO	Naval fight officer
NGF	Naval gunfire
NGLO	Naval gunfire liaison officer
NSFS	Naval surface fire support

OIC	Officer in charge
OP	Observation post
RFA	Restrictive fire area
RFL	Restrictive Fire Line
SFCP	Shore fire control party
TACP	Tactical air control party
T/O	Table of organization

Notes
